



WELCOME

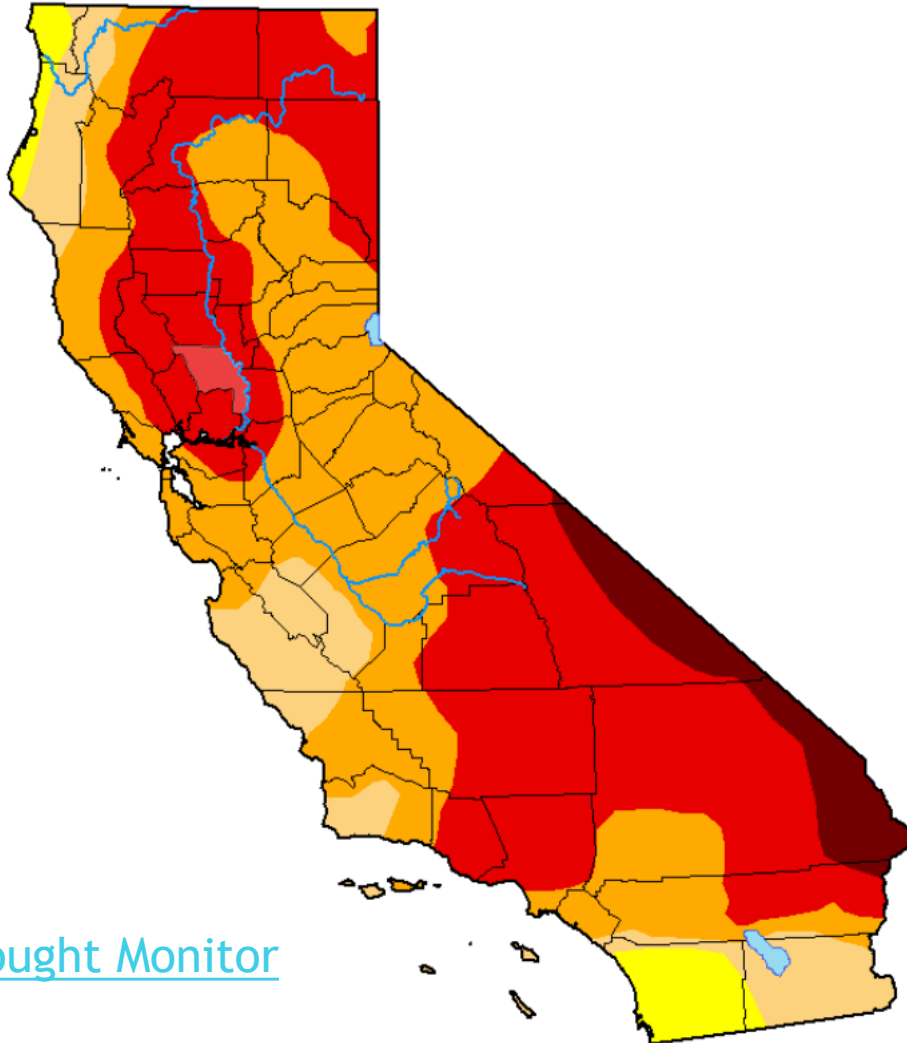
Santa Cruz County

Small Water Systems Forum

April 27, 2021

- ▶ Sustainable Groundwater Management Act Update
- ▶ Drinking Water Updates
 - ▶ Drought/Resilience
 - ▶ Needs & Risk Assessment Analysis
 - ▶ State Small and Private Well Data Reporting Changes (SB 200)
 - ▶ Private Well Testing Program (Pending)
 - ▶ CZU Fire Updates, Upcoming Workshop
 - ▶ PFAS Update
 - ▶ Chromium-6 Update
 - ▶ Lead and Copper Rule Updates
 - ▶ Cross Connection Control Policy Handbook
 - ▶ EAR Status/Updates

Drought/Resilience



Map released: Thurs. April 22, 2021

Data valid: April 20, 2021 at 8 a.m. EDT

Intensity:

- None
- D0 (Abnormally Dry)
- D1 (Moderate Drought)
- D2 (Severe Drought)
- D3 (Extreme Drought)
- D4 (Exceptional Drought)
- No Data

Source: [U.S. Drought Monitor](#)

Drought / Resilience

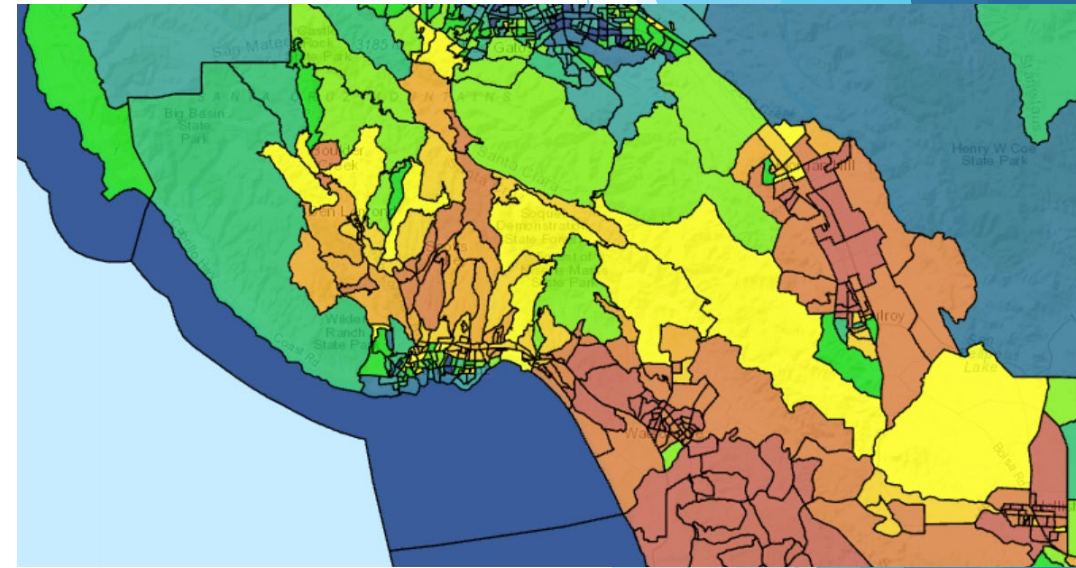
- Drought Emergency Declared- Mendocino, Sonoma Counties
 - Snowpack reported at 59% on 4/1/21
 - 85% of the state reported to be in severe, extreme, or exceptional drought
 - No additional State or County requirements for small water systems at this time
 - Current County ordinance- prohibition on excessive/wasteful water usage
 - Metering and production reporting requirements for small water systems regulated by the County (5-199 connections, noncommunity systems)



CA Dept. of Water Resources

Drought/Resilience

- Drinking Water Needs Assessment
 - Includes:
 - Risk Assessment
 - Cost Assessment
 - Affordability Assessment
 - Informs use of Safe & Affordable Drinking Water Fund (up to \$130 million per year)
 - Risk Assessment- [Link](#)
 - Public Water Systems- Individual Risk Scores
 - State Smalls and Domestic Wells- Aquifer Risk Map (pictured)



CA Water Resources Control Board

Drought / Resilience

- **Drinking Water Needs Assessment**
 - Risk Assessment Indicators (among others):
 - History of *E.coli* presence
 - Sources exceeding a Maximum Contaminant Level (MCL)
 - Water quality results- increasing toward MCL
 - Total number of water sources (fewer sources = higher risk)
 - Presence of interties (connections with other water systems)
 - Water source types
 - Groundwater basin overdraft status
 - Affordability (water bill factors- % of household income, shutoffs, etc.)
 - Number of service connections
 - Monitoring and reporting violations
 - Sanitary deficiencies

Drought/Resilience

- Resilience/Preparation

- Keep an eye on your groundwater levels!
 - Acoustic/electric sounders can be used at a wellhead, access port needed
 - County well measurements- please contact Sean Abbey if interested (Sean.Abbey@santacruzcounty.us)
- EPA CREAT (Climate Resilience Evaluation and Awareness Tool)
 - Highly recommended for community and state small water systems
 - Useful information for noncommunity water systems as well



Ravensgate Corp.

Increased data collection for State Smalls and Private Wells

As part of Senate Bill 200 the state has started the process of creating an inventory of water suppliers all the way down to individual well owners.

- The aim is to locate and assist systems that could be under threat of losing access to water through drought or poor water quality
- Systems or owners that are identified will be directed to new sources of funding that will assist in consolidation management, treatment installation, and delivery of alternate water supplies

Private Well Testing Program ([Link](#))

- CC Drinking Water Well Testing Program
 - Central Coast Water Board program implemented in partnership with Community Water Center, Community Foundation Santa Cruz, and the County
 - Testing rollout pending- COVID-19 restrictions temporarily halted program
 - Free one-time water quality testing available to small domestic well owners (1-4 properties/connections served, as well as state small water systems (5-14 connections)
 - Focus on testing for arsenic and nitrate
 - Waitlist for Santa Cruz County- submit interest form through website (link above)



CZU Fire Updates

•Recovery/Rebuilding

- Newly formed County Office of Response, Recovery & Resilience (OR3)
- County Recovery Permit Center established to provide more streamlined process for building permits related to CZU Fire damage
- Fire Safety, Environmental Health, and Geologic Hazard clearances needed before submitting building permit application
- Public meeting: septic and well permit requirements, application process
 - This Saturday, 5/1 from 10:00-11:30 AM
 - OR3 Events Page (including link to join 5/1 meeting): [Link](#)

PFAS Update



Source: [Riverside Public Utilities](#)

PFAS Update



Non-stick cookware



Waterproof clothing



Furniture and carpeting



Personal care products



Food packaging

- PFAS- perfluorinated compounds found in consumer products and firefighting foam, among other sources
- Very persistent in the environment- difficult to remove
- Detections near landfills, military bases
- Updated monitoring orders from the state- public notification or source modification required if advisory levels exceeded
- MCLs under development

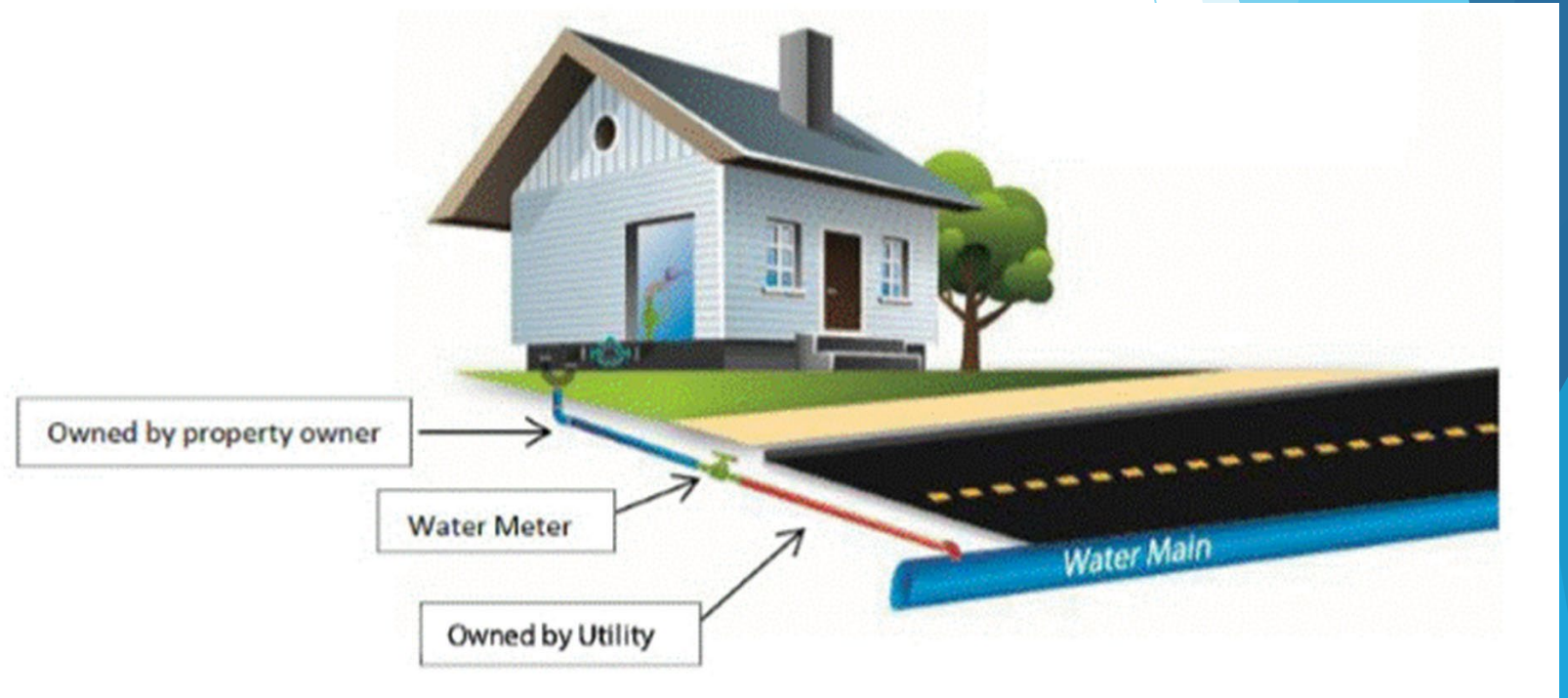
Chromium-6 MCL Development

- **Current Status**

- Notice of Proposed Rulemaking- Spring/Summer 2021
- Treatment cost estimates released November 2020
- Point-of-Use (POU) devices still appear to be most economically feasible option for affected small water systems
- 6 small public water systems in Santa Cruz County with sources in exceedance of previous MCL of 10 parts per billion
- MCL still to be determined

Lead and Copper Rule Updates

- Jan 15, 2021: U.S. EPA finalized the first major update to the Lead and Copper Rule in nearly 30 years
- Major Change 1:
 - ▶ All community and NTNC water systems must complete an inventory of service lines, regardless of ownership, by **January 16, 2024**
 - ▶ The EPA's new LCRR expands the definition of "service line" to also include "Owned by property owner" such that the entire line, regardless of ownership, is required to be included in a water system's inventory.



Lead and Copper Rule Updates

- Sources of information for the new Lead and Copper Inventory
 - Initial inventory of service lines in its distribution system
 - Construction and plumbing codes at time of building construction
 - Building permits or other documentation.
 - Distribution system maps and drawings, meter installation records, historical capital improvement or master plans, and standard operating procedures.
 - Inspection records.
- The water system service line material must be categorized with the following: **lead**, **galvanized**, **non-lead** (including copper, plastic, or steel) or **lead status unknown**.
- Old galvanized line that is downstream of a lead line will be considered to need replacement.
- Two water samples to be collected: one first flush (copper), and one after five liters of flushing (lead)

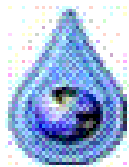
Cross Connection Control Policy Handbook

Replaces previous cross-connection control standards

- The State Water Board was mandated to adopt standards for backflow protection and cross-connection control by January 1, 2020. Public comment period ended today, 4/27/2021
- Mandates that a public water system must implement a cross-connection control program that complies with the standards adopted by the State Water Board
 - Transient noncommunity and nontransient noncommunity systems may need to have internal cross-connection control programs within the user premises
- More information can be found at the website below:
 - https://www.waterboards.ca.gov/drinking_water/certlic/drinkingwater/cccp.html

Electronic Annual Report Updates

- **DUE MAY 15th**
- Currently we have;
 - 46 water systems that have not started their EAR
 - 25 that have started
 - 13 that are in process, and
 - 11 that need final approval
- Be aware, the new website is slower than the previous version. Allow additional time for pages to load
- Any questions from users that have started?



WELCOME TO THE

Electronic Annual Reporting System

The background features abstract, overlapping geometric shapes in various shades of blue, ranging from light sky blue to deep navy blue. The shapes are primarily triangles and polygons, creating a dynamic, layered effect. The text is centered on a white background that occupies the left and middle portions of the frame.

Questions?

Future meeting topics?

Thank You!