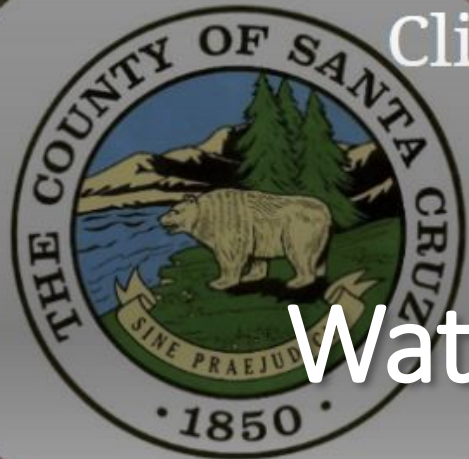
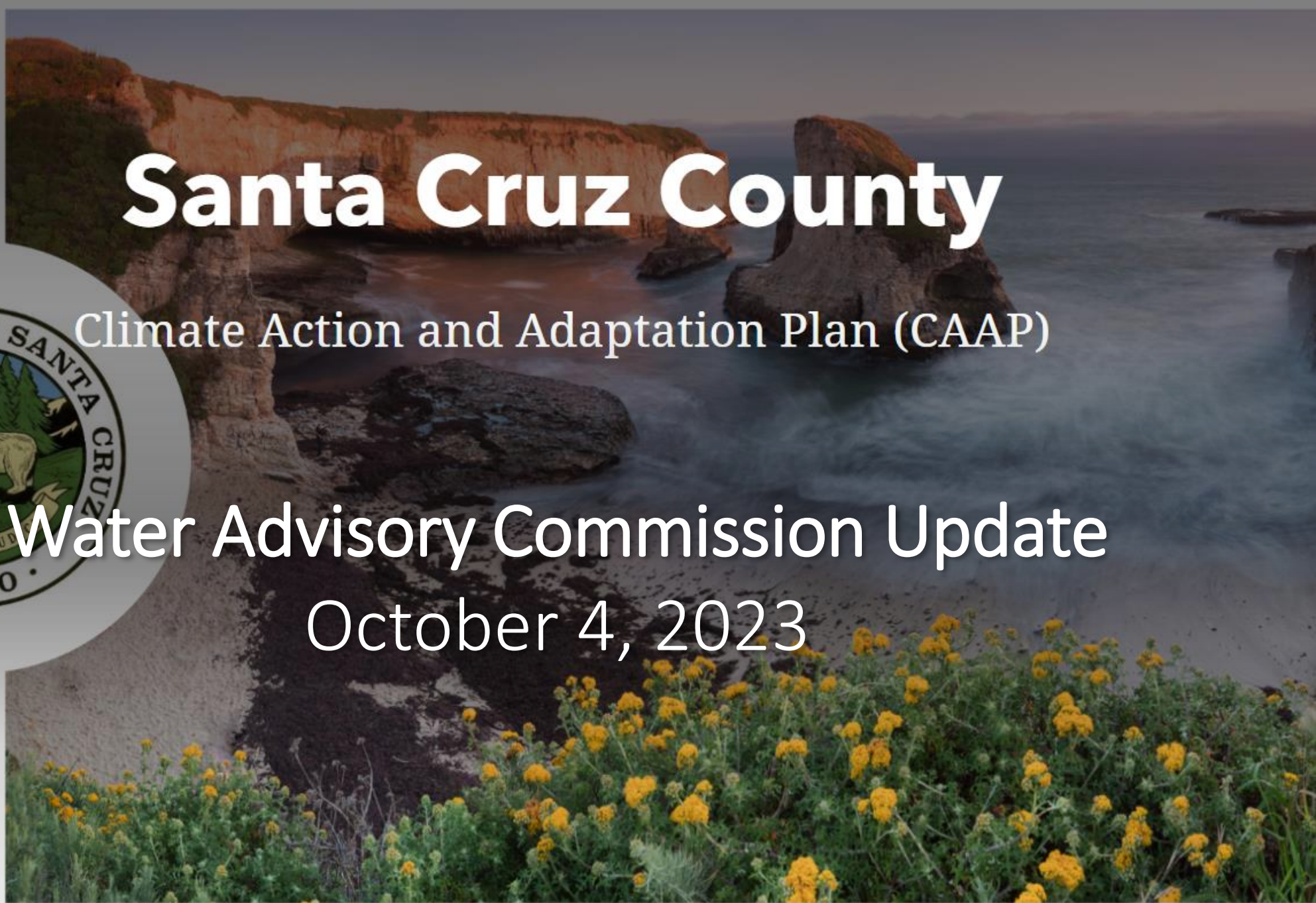


Santa Cruz County

Climate Action and Adaptation Plan (CAAP)



Water Advisory Commission Update
October 4, 2023



CAAP Framework

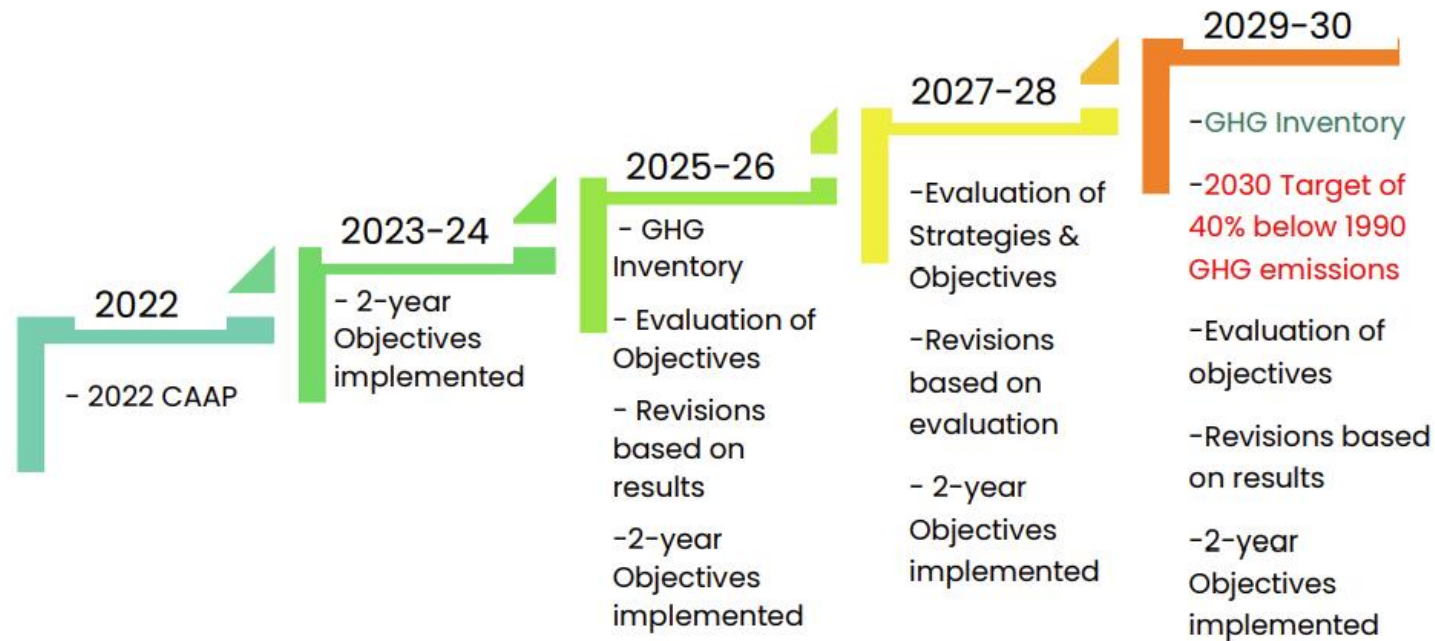
2022 CAAP

Mitigation

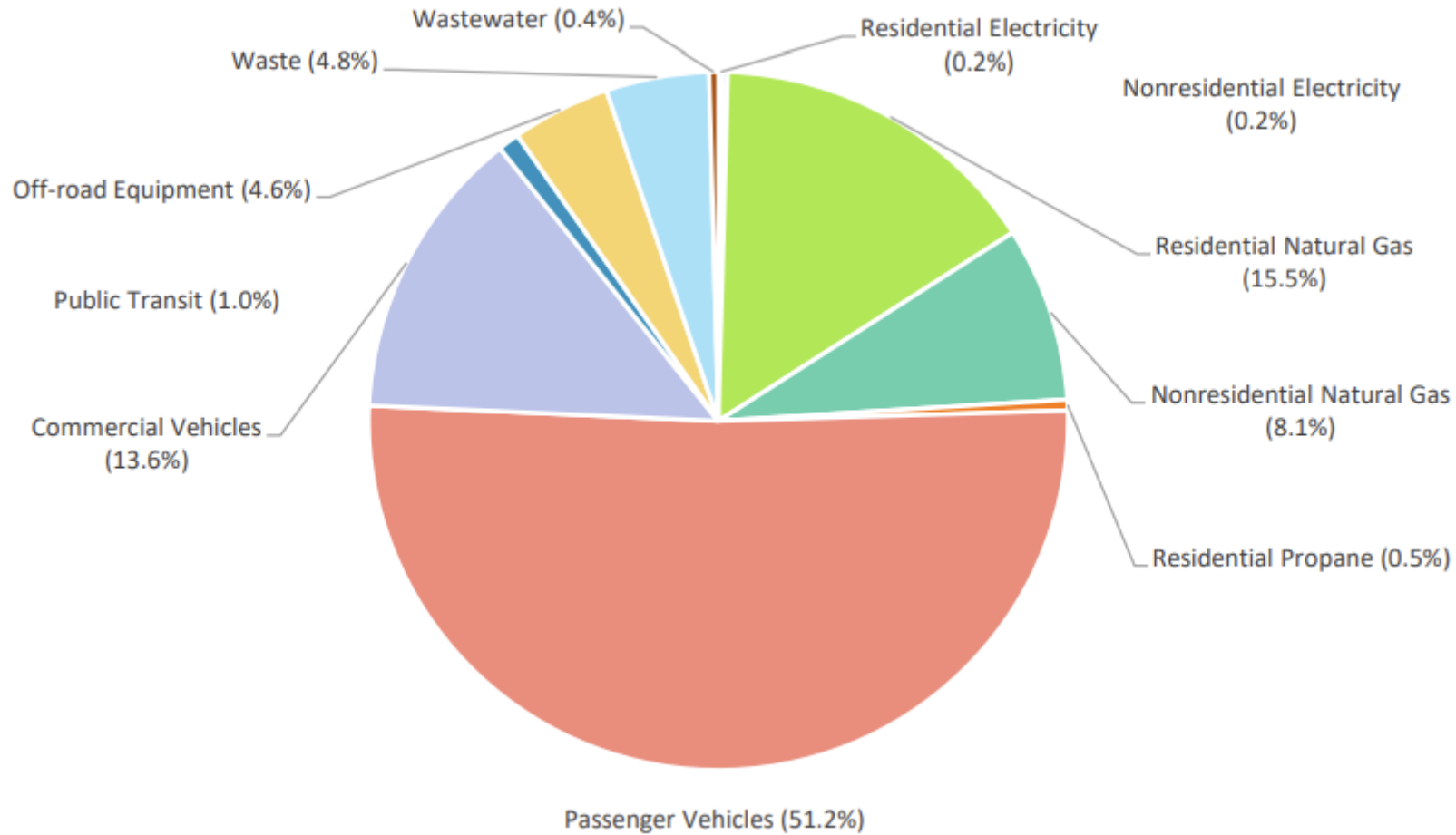
Adaptation

Equity

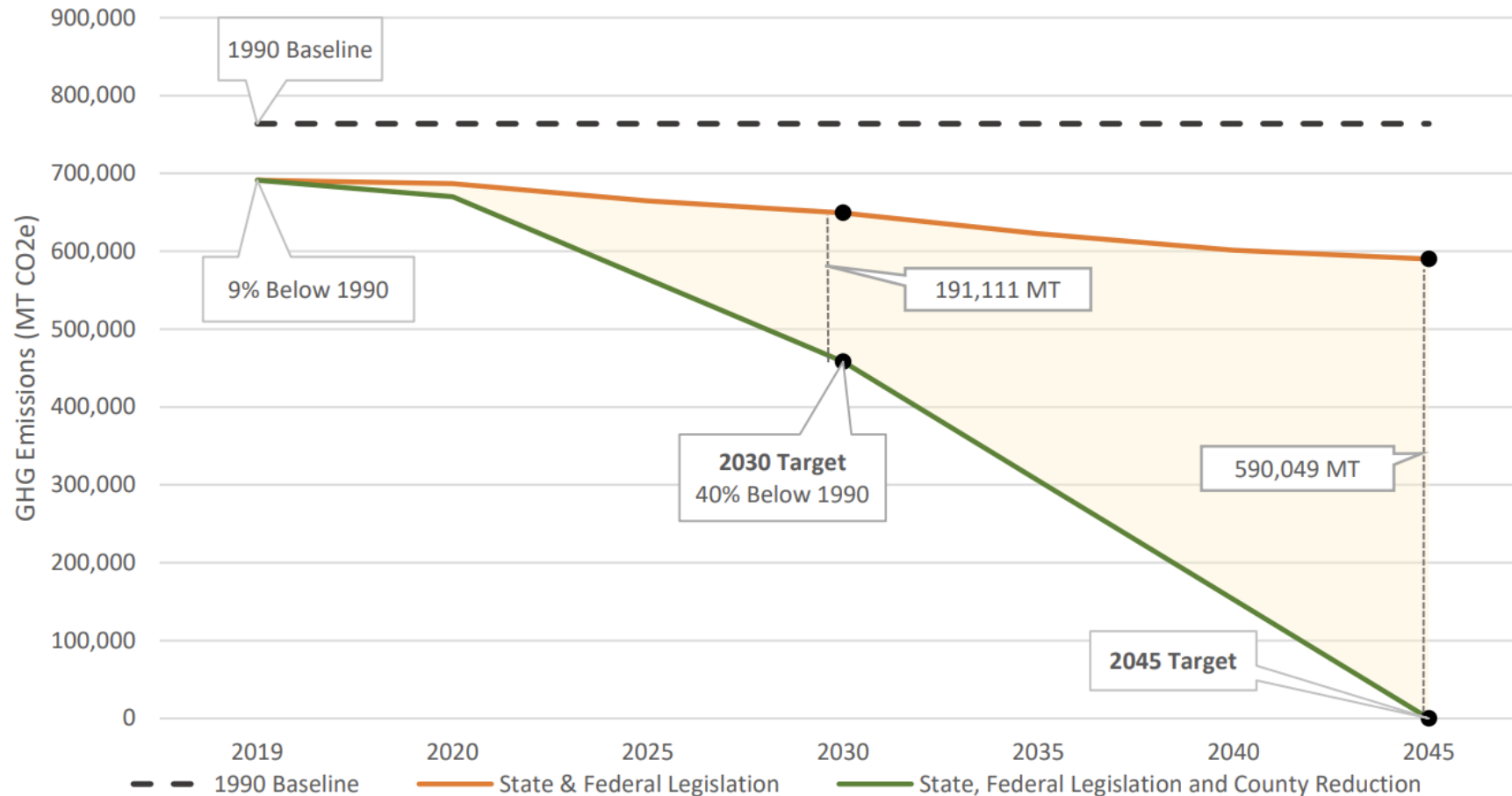
Partnership



Greenhouse Gas Emissions



GHG Emissions Reductions Targets

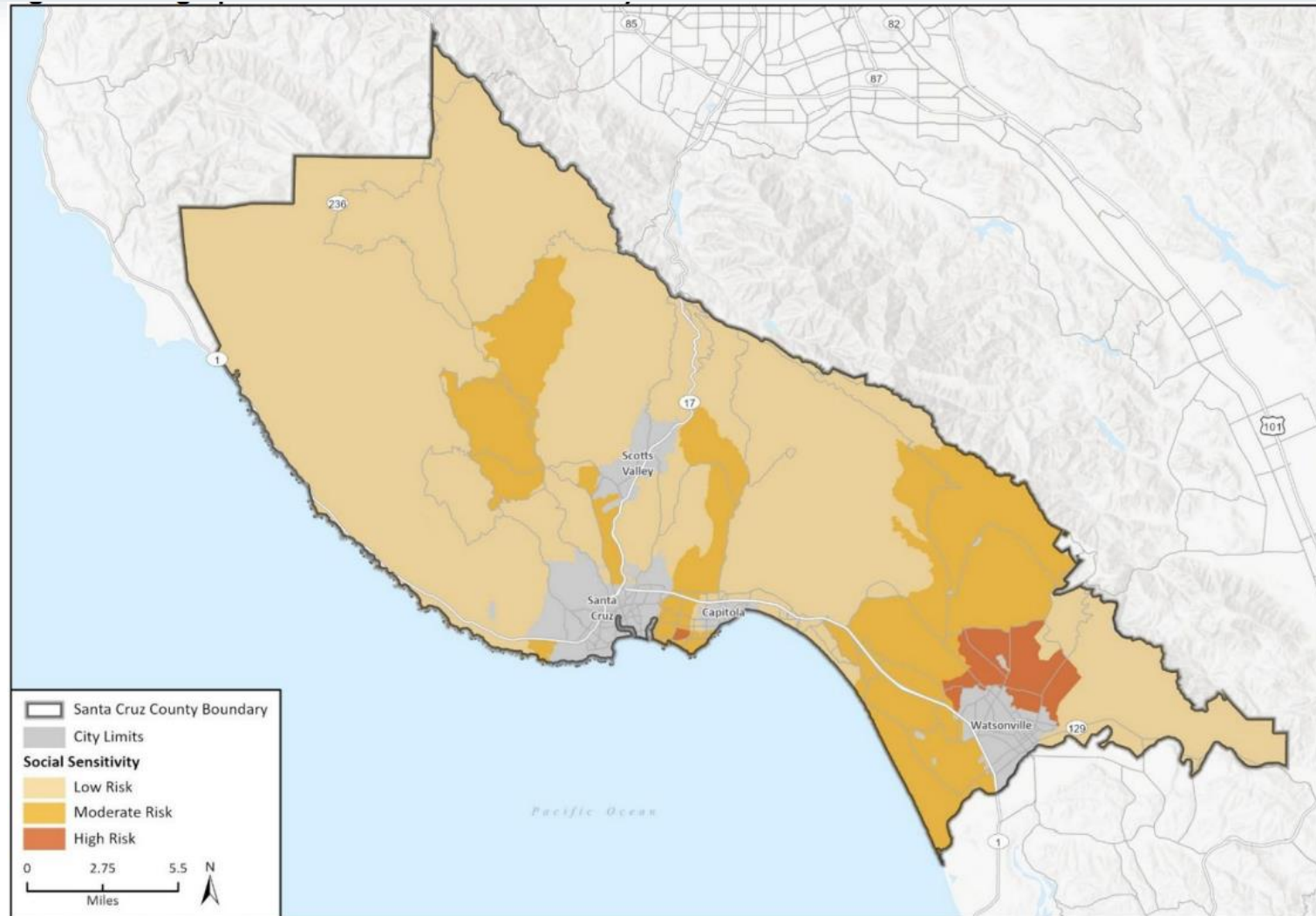


Climate Hazards

Climate Hazard	Vulnerable Populations	Natural Resources	Buildings, Services and Infrastructure
Extreme Heat	X	X	X
Wildfire	X	X	X
Landslides	X	X	X
Riverine and Stormwater Flooding	X	X	X
Sea Level Rise	X	X	X
Saltwater Intrusion	X	X	X
Air Quality	X	X	
Drought	X	X	

Climate Equity

Geographic Locations of Social Sensitivity Risk to Climate Hazards



Basemap provided by Esri and its licensors © 2022.
Additional data provided by CDC, 2015; U.S. Census Bureau, 2021.

Vulnerability Assessment.aprx
Fig X Social Sensitivity in Santa Cruz County

2022 Focus – Goals

Implementation of Strategies and Objectives
Involve Choices Aligned with These Goals

Affordable
Housing

Healthy
Ecosystems

Healthy
Communities

Decarbonization

Resilience

Staff
Engagement

Programmatic
Approach

2022 Focus – Strategy Framework

Sector	Primarily Mitigating or Adapting to Climate Change	Primary Reason for Including
Energy	Mitigating	Major source of GHG emissions
Transportation	Mitigating	Major source of GHG emissions
Water	Adapting	Water supply addresses address one of the three primary climate hazards, drought.
Waste	Mitigating	Source of GHG emissions
Natural and Working Lands	Adapting	Healthy natural lands address one of the primary climate hazards, heat, and hold carbon from the air.
Wildfire Prevention	Adapting	Healthy, well-maintained forests address one of the primary climate hazards, wildfire.
Government Operations	Adapting and Mitigating	Significant system changes will need to be made through legislation, local policy and support of community choice energy.

2022 Focus – Strategy Framework



CAAP Strategies

Energy

Transportation

Solid Waste & Water

Natural & Working Lands

Government Operations

The Issue With Wasted Organics

About SB 1383

Strategies for Solid Waste

Strategies for Water

Progress Tracker

Strategies for Water

The following strategies were designed for Santa Cruz County to help the community increase water resilience and reduce community emissions by recognizing wastewater as a resource:

- **W-1 Better protect and manage local county aquifers**
- **W-2 Increase the use of reclaimed wastewater and stormwater for irrigation and general use**

2022 Focus – Objective Framework

Objective Type	Purpose
Implementation Objective	Preliminary studies or action necessary to support project or program design
Engagement Objective	Engagement and education necessary to implement the project or program.
Code Objective	County policy and regulatory changes necessary for project or program implementation.
Partnerships Objective	County Departments and other agencies/organizations that will support with design, implementation and/or education.
Funding Objective	Financial plan for funding the project or program.

2022 Focus – Objective Framework

- Identify County owned or managed parcels available for recharge projects
- Explore feasibility of select public and private sites with significant impervious surfaces to develop stormwater retention solutions
- Educate county departments on groundwater sustainability and work to identify project locations
- Partner with local agencies and GMAs to expand water resilience with recycled water and other means of recharge
- Seek grant funding

Supporting Departments: Santa Margarita Groundwater Agency, Santa Cruz Mid-County Groundwater Agency, Pajaro Valley Water Management Agency

Equity Guardrails

Strategy Implementation Translates into
Actions Necessary to Realize Climate Justice

Equity Guardrail	Criteria
Improves Health and Safety	<ul style="list-style-type: none">• Individual and population health• Life and property safety• Quality of life
Includes Appropriate Financial Options	<ul style="list-style-type: none">• Do not place additional disproportionate financial burdens or hardships on under-invested communities and• are designed with funding and financing options that address their specific needs
Aligns with Social and Cultural Needs and Values	<ul style="list-style-type: none">• Culturally relevance• Needs of the community• Values of the community• Include partnership with community-based organizations that are equipped with the valuable relationships, knowledge, and trust to succeed
Reduces potential for displacement	<ul style="list-style-type: none">• Protect under-invested communities from potential financial or environmental displacement• Support adaptive capacity and resilience for under-invested community members• Protect under-invested communities from cost-of-living increases
Continues Investment and Engagement	<ul style="list-style-type: none">• Continue engagement with under-invested communities over the course of implementation• Include engagement with under-invested communities during implementation to address unforeseen barriers and constraints
Provides local and accessible green job development	<ul style="list-style-type: none">• Support local and accessible green job development• Support green job employment for people experiencing barriers to employment

Equity Matrix

Example from CAAP
Appendix E

Climate Action and Adaptation Plan		Equity Guardrails					
Strategy		Integrates Health and Safety	Includes Appropriate Financial Options	Provides Social and Cultural Support	Reduce Displacement Potential	Continued Investment and Engagement	Provides Local and Accessible Green Job Development
17	Increase the demand for organic waste products by developing a reuse solution.	Will be examined further during implementation	Will be examined further during implementation	Identifies cultural and social influences affecting compost utilization.	Seeks opportunities to lower the cost of waste management by fostering compost markets	Promotes long-term engagement with compost market actors	Promotes increasing workforce capacity to meet compost distribution needs.
Natural Working Lands Sector							
18	Enhance carbon sequestration strategies through conservation and restoration of natural habitats, sustainable farming practices, and carbon capture technologies.	Will be examined further during implementation	Will be examined further during implementation	Partners with agriculture organizations to leverage knowledge around achievable sustainable practices	Will be examined further during implementation	Will be examined further during implementation	Encourages growth of sustainable agricultural practices
19	Increase the urban canopy.	Reduces urban heat island effects.	Will be examined further during implementation	Surveys the values and needs of communities with inequitable canopy cover	Identifies funding sources that do not impact disadvantaged communities	Will be examined further during implementation	Will be examined further during implementation
Wildfire Prevention							

2022 Document – Links

Document:

[https://www.santacruzcountyca.gov/Portals/0/County/OR3/CAAP/2022%20Climate%20Action%20and%20Adaptation%20Plan%20\(CAAP\).pdf](https://www.santacruzcountyca.gov/Portals/0/County/OR3/CAAP/2022%20Climate%20Action%20and%20Adaptation%20Plan%20(CAAP).pdf)

Storymap:

<https://storymaps.arcgis.com/stories/b375ce70a7374b8d9d1d3b6654d31b61>

Measurement and Accountability Framework

Workgroup Members	Steering Committee	Dept
Amanda Poulsen	David Sandford	Ag C.
Sierra Ryan	Emily Chung	HSA
Robert Tidmore	Rebecca Hurley	Parks
Darcy Pruitt	Kent Edler	CDI
David Carlson	Stephanie Hansen	CDI
Michael Hettenhausen		CDI
Jeni Gomez	Matt Price	ISD

Workgroup Deliverables
1. Mitigation Metrics & GHG Reduction Targets
2. Adaptation Metrics
3. CAAP Accountability Framework <ul style="list-style-type: none"> a. Taskforce (Oversight) b. Workgroup (Implementation of Objectives) c. Accountability Mechanisms & Feedback Loops

Workgroup Estimated Time	
42 Hours	
7 mtgs (2hrs each)	
Mtg Hrs	14
Prep Hrs:	16
Coord Hrs:	12
Total hrs	42

Workplan with Roles							
Role	Responsibility						
CAO/CAAO		Request Dept Engagement					
Dept Directors		Approval of Workgroup and Steering Committee Members, Time & Work					
OR3 Project Manager	Planning	Messaging to Depts	Provide options for Accountability Framework	Provide options for Adaptation Measurements	CAAP Dashboard & database work	Draft Memo and Presentation & dashboard/database work	BOS Memo and Presentation & dashboard/database work
Steering Committee		Onboarding & Agree to Dept Obj Commitments	Feedback on Accountability Framework	Dept Approval of GHG Reduction Targets & Metrics	Final Dept Approvals of Metrics & Framework		Ensure that Dept is on track to complete FY 22-23 Obj
Workgroup		Workgroup Onboarding	Select Accountability Framework	Design Adaptation metrics & Approve Mitigation metrics	Final Edits to Metrics & Wrap-Up	End of Ad Hoc Workgroup	
	July	August - 1 mtg	September - 2 mtgs	October - 2 mtgs	November - 2 mtgs	December	January (2nd BOS Mtg)

2023 Focus

Project Outcomes

Quantifiable Results & Clearly Defined Roles:

- Strategies and Objectives Quantified & Prioritized
- Staff Accountability Framework
- Equity Guardrails Application
- Dashboard & Database
- System for Evaluation and Monitoring